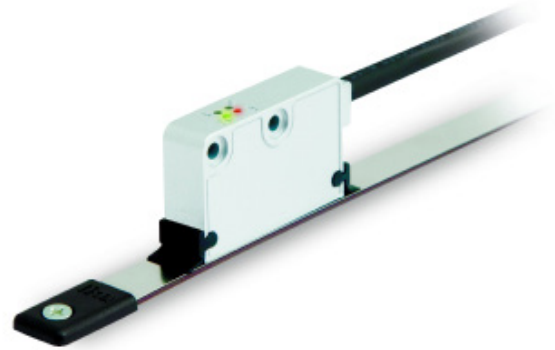


Series

SME54



- Programmable resolution and index width
- Set-up via PC software
- Gap clearance up to 2 mm
- Lika hi-flex sensor cable for drag cable chains
- Status LED for gap and speed
- Reference mark LKM1309/5 to be installed along the magnetic tape
- Optional tape cleaning wipers



SME54

ENVIRONMENTAL SPECIFICATIONS

Shock:	250 g, 6 ms acc. to CEI EN 60068-2-27
Vibrations:	10 g, 5-2000 Hz acc. to CEI EN 60068-2-6
Protection:	IP67
Operating temperature range:	-25°C ÷ +85°C (-13°F +185°F)
Storage temperature range:	-40°C ÷ +100°C (-40°F +212°F)

MECHANICAL SPECIFICATIONS

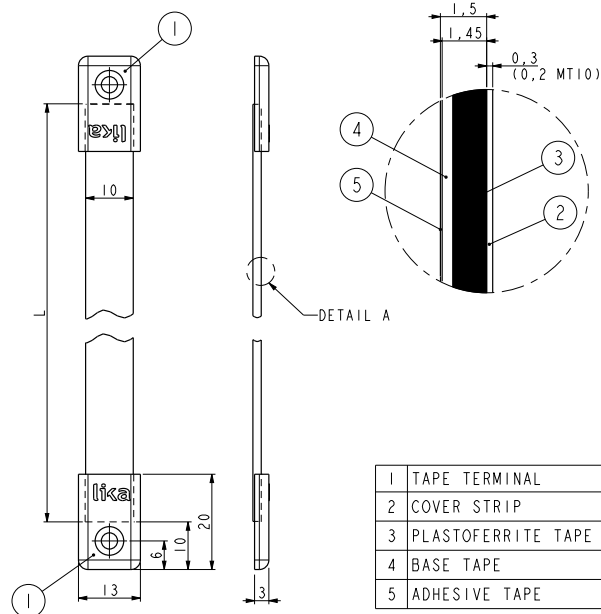
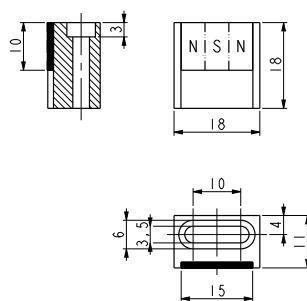
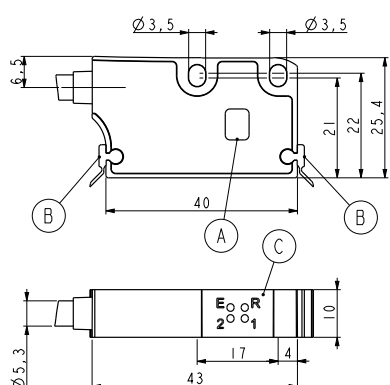
Dimensions:	see drawing
Housing material:	die cast aluminium, UNI EN AC-46100
Electrical connections:	Lika Hi-flex cable M10 2,0 m 0,5 ÷ 1 m cable T12 with M12 12 pin inline plug
Gap between sensor/tape (without cover strip):	0,1 ÷ 2,0 mm
Travel speed (mechanical):	max 10 m/s
Measurement length:	Tape length -5 mm each side

ELECTRICAL SPECIFICATIONS

Resolution:	programmable from 1250 µm to 0,08 µm (default: 5 µm)
Sensor accuracy:	±10 µm max.
Repeat accuracy:	±1 increment
Output circuits:	Line Driver, Push-Pull
Output signals:	ABO /ABO
Counting frequency:	Push-Pull: 3 MHz max. @ 24Vdc, cable 1 m Line Driver: 5 MHz max. @ 5Vdc, cable 1 m
Power supply:	+5Vdc ±5%, +10Vdc ÷ +30Vdc
Power consumption:	70 mA max.
Protection:	against inversion of polarity and short-circuit
EMC:	acc. to EN 61000-6-2 level 3

ACCESSORIES

MTI-0500:	Magnetic tape
LKM-1309/5:	Reference pole support
KIT LKM-1440:	Set of tape terminals
KIT WIPERS:	Wipers for SMExx/SMSxx (10 pcs)
EC-M12F12-LK-T12-050	M12 cordset with 5 m cable
EC-M12F12-LK-T12-100	M12 cordset with 10 m cable
KIT IP/IQ58:	Programming kit
EC-IP/IQ58-M12	M12 programming cable



A	Reference sensor "R"
B	Dust wipers
C	Diagnostic LEDs
E	Gap/Speed error (red)
R	Reference detection (green)
1	Power ON (green)
2	Gap/Speed warning (red)

1	TAPE TERMINAL
2	COVER STRIP
3	PLASTOFERRITE TAPE
4	BASE TAPE
5	ADHESIVE TAPE

SME54

LKM-1309/5

MTI-0500-10

Order code - Sensor

SME54	-	XXX	-	XXXX	-	X	-	XXXX	/Sxxx
		(a)		(b)		(c)		(d)	(e)

<p>(a) OUTPUT CIRCUITS & POWER SUPPLY Y2 = Push-Pull (AB), +10Vdc ÷ +30Vdc YC2 = Push-Pull (AB, /AB), +10Vdc ÷ +30Vdc L1 = Line Driver (AB, /AB), +5Vdc ±5%</p>	<p>(b) RESOLUTION OPRG = programmable</p> <p>(c) INDEX R = unique reference signal</p>	<p>(d) CABLE TYPE & LENGTH L020 = cable output 2 m M005 = 0,5 m cable + M12 inline plug F010 = 1 m cable + M12 inline plug</p>	<p>(e) CUSTOM VERSION</p>
---	--	--	----------------------------------

Order code - Magnetic tape

MTI	-	XXXX	-	XX	-	XXXXXX	-	X	-	X	-	X	-	XXX	/Sxxx
		(a)		(b)		(c)		(d)		(e)		(f)		(g)	(h)

<p>(a) CODING 0500 = 5 mm pole pitch (ex MT50)</p> <p>(b) WIDTH 10 = 10 mm</p>	<p>(c) LENGTH 001000 = 1 m 002000 = 2 m 004000 = 4 m 010000 = 10 m 020000 = 20 m 030000 = 30 m 050000 = 50 m 100000 = 100 m</p>	<p>(d) BIADHESIVE B = supplied N = not supplied</p> <p>(e) PRINTING P = standard S = custom</p>	<p>(f) COVER STRIP C = supplied N = not supplied</p>	<p>(g) ACCURACY CLASS 100 = ±85 µm/m 050 = ±35 µm/m (up to 30 m) 010 = ±8 µm/m (up to 10 m)</p>	<p>(h) CUSTOM VERSION</p>
--	--	---	---	---	----------------------------------

Document release	Date	Description
1.0	December 2023	New order code